



YELAHANKA, BANGALORE

Affiliated to Visvesvaraya Technological University (VTU)
Approved by Council of Architecture (COA)
Accredited by National Assessment and Accreditation Council (NAAC)
Recognised by University Grants Commission (UGC)



B.ARCH | M.ARCH | PHD

ADMISSION PROSPECTUS 2024-25

www.bmssa.ac.in

MISSION

Educating future generations to be

ETHICAL professionals,
CREATIVE designers and
INFORMED citizens.

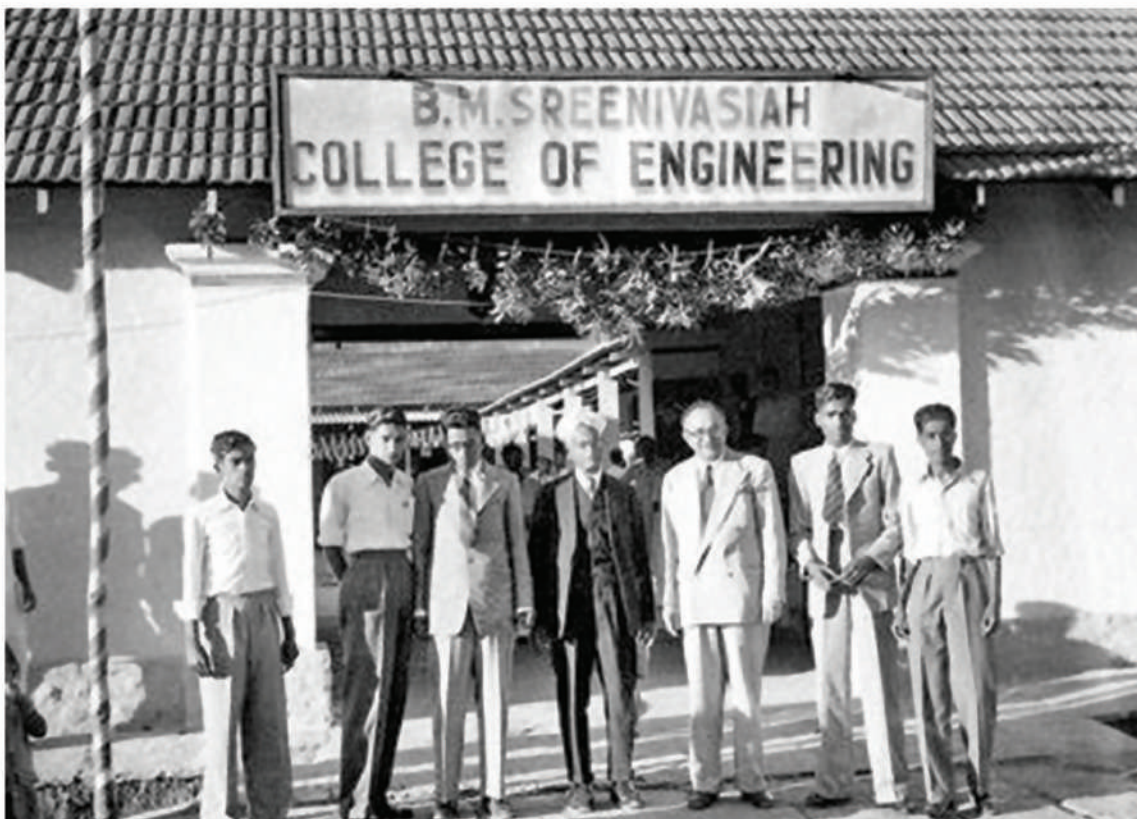


BMS SA operates under the aegis of the prestigious **BMS EDUCATIONAL TRUST**

The legacy of BMS Educational Trust (BMSET) is that in **1946**, as the **very first private initiative in PRE-INDEPENDENT India**, **Late Sri. Businayana Mukundadas Sreenivasaiah**, our visionary founder, set up the nation's first private engineering college B.M.S. College of Engineering (BMSCE).

After his demise, his enterprising son, **Late Sri. B. S. Narayan** developed BMS College of Engineering into one of the finest engineering colleges of the state. In addition, he established other institutions of higher education.

Today, ten institutes of repute, are effectively managed by the Council of Trustees appointed by **Dr. B. S. Ragini Narayan**, wife of Late Sri B. S. Narayan, who is the Donor Trustee & Chairperson of BMS Educational Trust (BMSET).



Our FOUNDERS

Late Sri B. M. Sreenivasaiah

Founder
BMS Educational Trust

Late Sri B. S. Narayan

Donor Trustee
BMS Educational Trust



Our TRUSTEES

Dr. B. S. Ragini Narayan

Donor Trustee, Member Secretary BMSET
Chairperson - BMSET, BMSCE, BMSECE,
BMSCW, ICD, BMSPUW & BMSECAC,
BoG Member - BMSSA

Dr. P. Dayananda Pai

Life Trustee - BMS Educational Trust,
BoG Member - BMSSA;
Chairman - BMSCE & BMSCA
Educationist, Industrialist,
Developer - Century Builders
(L)

Sri. Aviram Sharma

Trustee - BMS Educational Trust,
Chairman BMSIT&M, BMSCL, BMSCCM,
BoG Member - BMSSA
(R)

Sri. Ravi Venkatesam

Trustee - BMS Educational Trust,
Chairman - BMSSA

State Government Nominee
Member
Trustee, BMSET (Ex-Officio)

About

BMS SCHOOL OF ARCHITECTURE

The BMS School of Architecture (BMSSA) was established in the year 2010, upholding the legacy of the BMS group of institutes.

BMS School of Architecture, the 8th institution under the BMS Educational Trust, has the distinction of being established as an Independent "School of Architecture" in the year 2010. BMSSA is a center of innovation and one of the nation's few independent architecture schools with a stated mission of being dedicated to educating future generations to be ethical professionals, creative designers and informed citizens.

Located in amidst a green campus at Yelahanka, Bangalore, the school is distinguished by its unique learning environment. **The school has an Undergraduate program (B.Arch), Master's Program (Urban Design) and Ph.D. Research Center. The school is affiliated with VTU, Belgavi and approved by CoA, New Delhi. BMSSA is a center of innovation and one of the nation's few independent architecture schools accredited by the National Assessment and Accreditation Council (NAAC).** With a strength of approximately 500 students and 50 faculty members, the approach adopted by the school is to encourage students to think out of the box and explore the limits of architecture.

A distinctive component of the school are its hands-on workshops, guest lectures and study tours and through which the students are allowed to dabble with different parameters in design and update themselves on the current affairs in the world of architecture. Our national and international study tours give them direct exposure to the miracles of the Masters. BMSSA is inimitable in its active involvement with government & private industries, NGO's, social groups, networking with other institutions and its responsibility towards the society.

CET Code: E215
VTU Code: BQ

Comedk Code: E029
COA Code: KA17

Dr. Shaila Bantanur
PhD, IIT-Roorkee

Director & Professor, BMS SA
Member Secretary, BOG BMS SA

DIRECTOR'S MESSAGE

BMS School of Architecture, the 8th institution under the very highly reputed BMS Educational Trust has the distinction of being established as an Independent institution in the year 2010. BMSSA is one of the nation's few architecture schools with a stated mission of educating future generations to be ethical professionals, innovative designers and responsible citizens. The school is committed with its vision of creating a holistic platform for students, enhancing them to prosper in their field of interest.

Education is the means of developing greater abilities to enable critical thinking, inculcate technical as well as moral awareness for the benefit of the individual and society at last. The Experiences gained should impart knowledge, build confidence and bring in compassion for the successful and effective knowledge in all domains. There should also be an emphasis on learning Indian principles to merge modern cognitive thinking with cultural values so that the students develop a connect with the society both nationally and globally. The Students are prepared to tackle all kinds of difficulties at personal as well as community level.

As I say, Goals without proper plans are just dreams. For the Institution to function to its best, industrial tie-ups and expert's interactions will be a key factor for the students to have an idea of the societal needs and demands. Research Collaborations and student - exchange programs have always been my area of interest and my earlier projects emphasize more on these aspects. The Faculty and staff have always been instrumental and clinical whatever they aspire to do, which resulted in the school turning out to be what it is today.



Our FACULTY



Faculty at BMSSA use a wide range of innovative approaches to architectural education. Our faculty have graduated from **premier institutes from India and abroad**. Being a unique blend of **practicing architects and academicians**, the faculty together develop a unique and robust plan of action every semester for each subject to keep the students intrigued and engaged, and are committed to improving the standards of education by exploring new methods of instruction.



INFRASTRUCTURE

Our STATE-OF-THE-ART GREEN CAMPUS

The college is committed to create the highest quality infrastructure and upgrade existing infrastructure to meet the continuously growing needs of the academic system, through a Strategic Plan formulated by the institution. The plan intends to give importance to maximizing efficient usage of available space along with integration of traditional teaching methods with ICT (Information & Communications Technology). The college has well ventilated Classrooms & Studios equipped with audio visual facilities, Workshops/Labs with sufficient supporting equipments, Hostel facilities for boys and girls, Faculty rooms, Outdoor and Indoor Sports facilities, Health care support, Library with sufficient resources constituted by the Advisory committee and well equipped computer lab with high speed WiFi enabled campus. The institution ensures optimal budgetary allocation for maintenance, upkeep of infrastructure and procurement of equipments, furniture to meet the needs of Intake of students. Learning Environments are further enhanced by optimizing the use of available support services, clubs, associations and Committees. The school is known for its green campus for which we were awarded the B.T. Lakshman Rolling Cup and Best Ornamental Garden-2019 for two consecutive years (2018 & 2019) presented by Mysore Horticulture Society, Lalbagh, Bengaluru.





TEACHING & LEARNING



The **B.Arch** program at its core houses the discipline of Design Studio where students are encouraged to experiment with visual forms, design ideas and climate responsive principles. They are also motivated to implement building technologies and innovative means of construction in their designs with an understanding of its impact in professional practice. The studio faculty is a unique mix of practicing architects and pure academicians. The B.Arch program includes a range of coursework, including art, history, theory, literature, sociology and economics that include unique assignments that correspond to analyzing the dynamic paradigms of socio-cultural aspects of the world. BMSSA also facilitates a wide range of **guest lectures and workshops** by pioneers in architecture and both **national and international study tours**. Students are also given an opportunity to participate in various **competitions, conferences**, outside college to test and polish their architectural knowledge and skills. BMSSA students leave the school with a portfolio of projects that enable them to pursue a future in professional practice.

BMSSA offers a 2 year **M.Arch** Programme in Urban Design approved by Council of Architecture, (CoA), recognised by Govt. of Karnataka and affiliated to VTU. The M.Arch program combines rigorous training in the skills of the discipline along with critical and advanced outlook on social and environmental awareness.

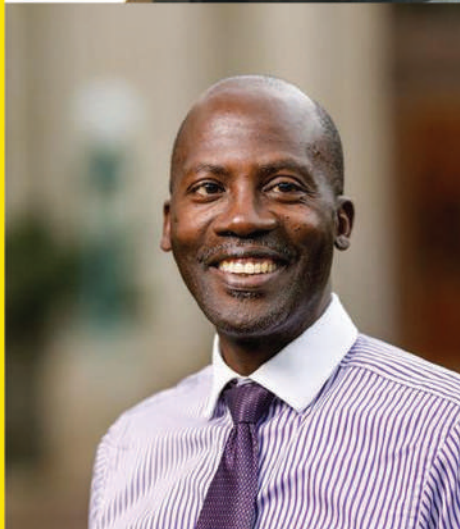
BMSSA is a recognised RESEARCH CENTRE of VTU. Presently, we have a group of committed **Ph.D** research scholars who are investigating topics ranging from participatory planning to energy efficiency in architecture.





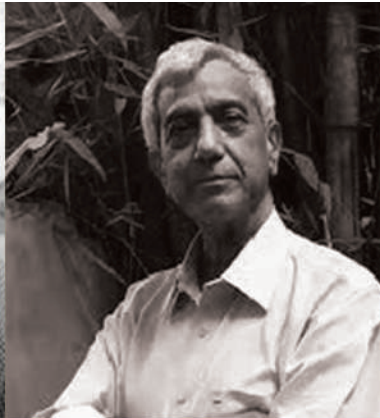
- Kevin Mark Low** Founder Small Projects - Malaysia
- Kai-Uwe-Bergmann** FAIA, Global Partner, BIG - Ejarke Ingels Group, New York
- Masa Noguchi** Associate Professor in Environmental Design of the Faculty of Architecture, Building and Planning, University of Melbourne, Australia
- Kheira Anissa** PhD, LEED AP, GAC, Professor and Chair, Department of Architectural Engineering, College of Engineering, United Arab Emirates University
- Fairfax & Sammons** Founding partners Fairfax & Sammons, NEW YORK & PALM BEACH
- John Onyango** Associate Professor of Architecture of the School of Architecture, University of Notre Dame (USA)
- Krishnarao Jaisim** Founder, Jain-Fountainhead, India
- Sanjay Mohe** Principal Architect, Mindspace Architects, India
- Prem Chandavarkar** Managing Partner - Caf Architects
- Chitra Vishwanath** Principal Architect, Founder & MD, Blome Environmental Solutions
- Pradipta Banerji** Professor of Structural Engineering at IIT Bombay & IIT Roorkee, also Director, Indian Institute of Technology Roorkee
- Vagish Naganur** Independent Architecture & Planning Professional of Bangalore, India (since 2003), Landscape designer from CEPT Ahmedabad
- Benjamin John** CAD City Advisor for Chennai and Bangalore, Architect, urban regional planner and urban designer
- Virendra Girdhar** Principal Architect, Bangalore, India since 1984
- Namith Varma** Founding partner Gayathri and Namith Architects Pvt Ltd in Koramangala, Bangalore
- Vishwanath V** Founder & Principal Architect at VV Architects, Formerly Vishwanath Associates | Architecture - Infrastructure - Interiors | Bangalore | Chennai
- Sharukh Mistry** Founder partner of Mistry Architects (specialized interest in "natural" architecture)
- Pankaj Modi** Technical project co-ordinator for INTACH Bangalore and South Zone Representative for ICOMOS India.
- Naresh Narsimhan** Managing Partner at VA - Venkataramanan Associates - a multi-disciplinary award-winning architecture firm based in Bangalore
- Sanjeev Vidyarthi** Professor and Department Head Director - Urban Planning and Policy (UPP) at the University of Illinois Chicago (UIC)

**ASSOCIATIONS
WITH
INTERNATIONAL
DOMAIN
EXPERTS**



**BMSSA
RESEARCH &
CONSULTANCY
CELL**

The cell offers invaluable practical experiences and guidance to both students and faculty. Its primary objective revolves around providing consultancy services, design assistance, and research collaborations to external clients, including governmental bodies, private organizations, NGOs, and local communities. These services encompass a diverse range of projects, such as urban planning, sustainable architecture, heritage conservation, and community development.



INDUSTRY LINKAGES

Since its inception, the School has acknowledged the influence of the industry in developing a holistic academic curriculum. To keep the students up to date with the professional advancements and ideologies of their contemporaries, various guest lectures are organized under the **Guest Lecture Series** and the **Industry Lecture Series**, wherein eminent practitioners are invited from architecture, research and allied fields to provide an alternate and thought provoking facet of the subjects explored as a part of the curriculum. This encourages the students to develop critical thinking and explore and redefine paradigms in architecture.





CAMPUS LIFE

SPORTS
CULTURALS
STUDENT FESTS
FESTIVALS

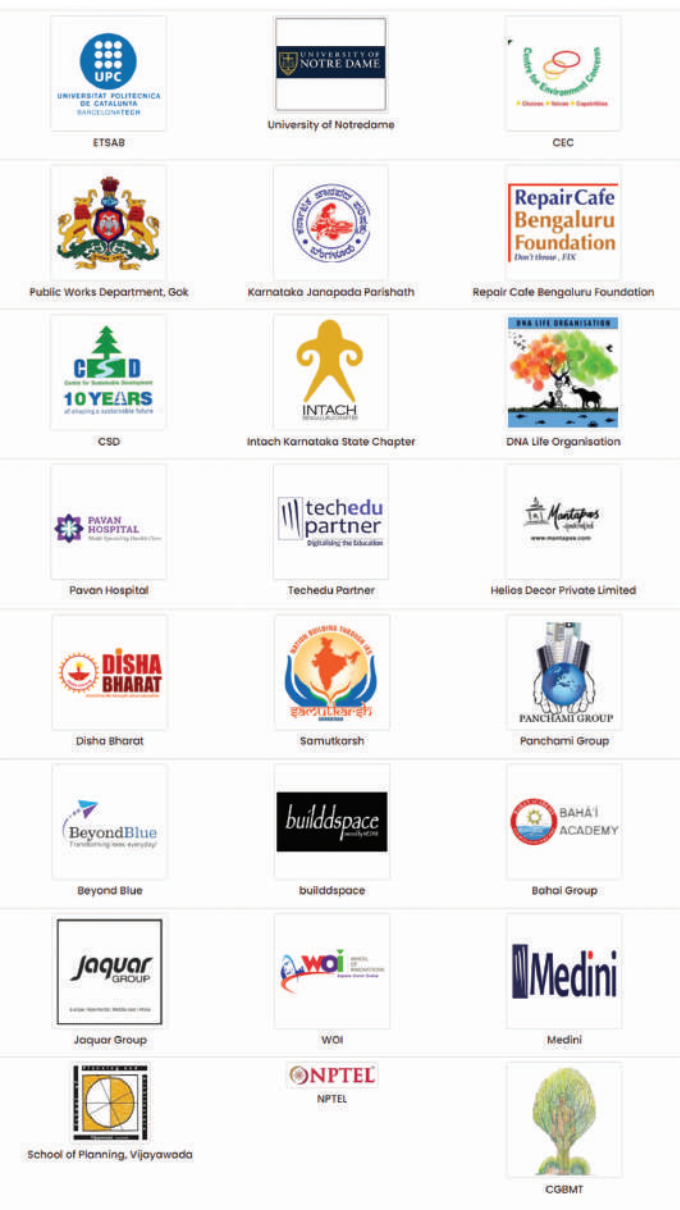




The college encourages the students to take part in various sport activities. The campus infrastructure has many indoor and outdoor sports facilities for the conveyance of the students. Our students and staff participate in various state and national level sport competitions and have won many prizes.

The Institute believes in holistic development of students. The Institute has facilities for both sports and cultural activities including a 250-seater auditorium. Events oriented towards social-responsiveness, national integrity, celebrating cultural diversity and environment consciousness are organized. The Student Council hosts the annual fest- UTSAHA-VAIBHAVYA, BMSSA OPEN DAY. The Council gathers members from various semesters to arrange for festival celebrations like Onam, Ganesh Chaturthi, Diwali, Kannada Rajyotsava etc. in the premises of BMSSA.





COLLABORATIONS

BMS School of Architecture collaborates extensively with national and international organizations, colleges, offices, and research centers to deliver a comprehensive and holistic education in Bachelor of Architecture (B.Arch) and Master of Architecture (M.Arch) programs. These collaborations enrich the academic curriculum by integrating diverse perspectives, global best practices, and cutting-edge research methodologies. Through partnerships with renowned institutions and industry leaders, students gain exposure to real-world projects, workshops, internships, and seminars, fostering a dynamic learning environment.

M.ARCH IN URBAN DESIGN

Our M.Arch in URBAN DESIGN curriculum, framed around six Program Specific Outcomes (PSOs), equips students to understand cities' dynamics, solve societal challenges, develop three-dimensional perspectives, cultivate design skills, execute collaborative urban projects, and contribute to urban research.

At BMS, we foster an environment encouraging innovation, critical thinking, and collaboration. Our curriculum ensures a holistic education, fostering adeptness in comprehending cities' spatial, temporal dynamics, and resolving multifaceted societal issues.

This two-year program merges rigorous discipline-specific training with a progressive societal and environmental outlook. Graduates emerge ready to tackle real-world urban challenges and shape the future of urban design and architecture.





BMSSA COMMUNITY OUTREACH



MAKING OUR GRADUATES

INDUSTRY-READY

Industry-oriented Skills

SOFTWARES

Our students are trained in the latest software with options for certification from AUTODESK-MEDINI. Our students are adept in drafting, rendering, simulation and total building performance management softwares.

VALUE-ADDED PROGRAMS

Our CO-CURRICULAR ACTIVITIES is meticulously designed to impart practical skills and knowledge that are directly applicable to real-world architectural practice. From design principles to construction techniques, our students gain hands-on experience that prepares them for the challenges of the industry. We expose our students to different sectors through interdisciplinary projects, internships, and workshops, ensuring they have a well-rounded understanding of the industry landscape.

ALUMNI NETWORK

Our extensive alumni network spans the globe and includes successful architects, designers, and industry leaders. Through alumni mentorship programs and networking events, our students have access to invaluable guidance and support as they transition from academia to the professional world.

Professional CV and PORTFOLIO

We understand the importance of a strong CV and portfolio in securing employment opportunities. That's why we provide guidance and support to our students in crafting professional resumes and portfolios that showcase their talents and achievements effectively.

ON-CAMPUS Placement Activities

Throughout the academic year, we organize various placement activities on campus, including networking events, and guest lectures by industry professionals. These activities offer our students valuable opportunities to interact with potential employers and gain insights into the latest trends in the field.

Active INDUSTRY LINKAGES

We have established strong partnerships with leading architectural firms, construction companies, and design studios to facilitate internship and placement opportunities for our students. These industry linkages provide our graduates with valuable hands-on experience.



PLACEMENT ACTIVITIES





ADMISSION INQUIRY

www.bmssa.ac.in
www.linkedin.com/in/bmssa-yelahanka-bangalore
https://www.instagram.com/bmssa_yelahanka_official/

ADDRESS

Off BMSIT Campus, Doddaballapur Main Road,
Avalahalli, Yelahanka, Bengaluru, Karnataka 560064

PHONE

080 29720032

EMAIL

admissions@bmssa.ac.in



INSTAGRAM LINK



CET Code: E215 ComedK Code: E029

VTU Code: BQ COA Code: KA17

All rights reserved 2023. Unauthorised access, copying and replication are expressly prohibited.